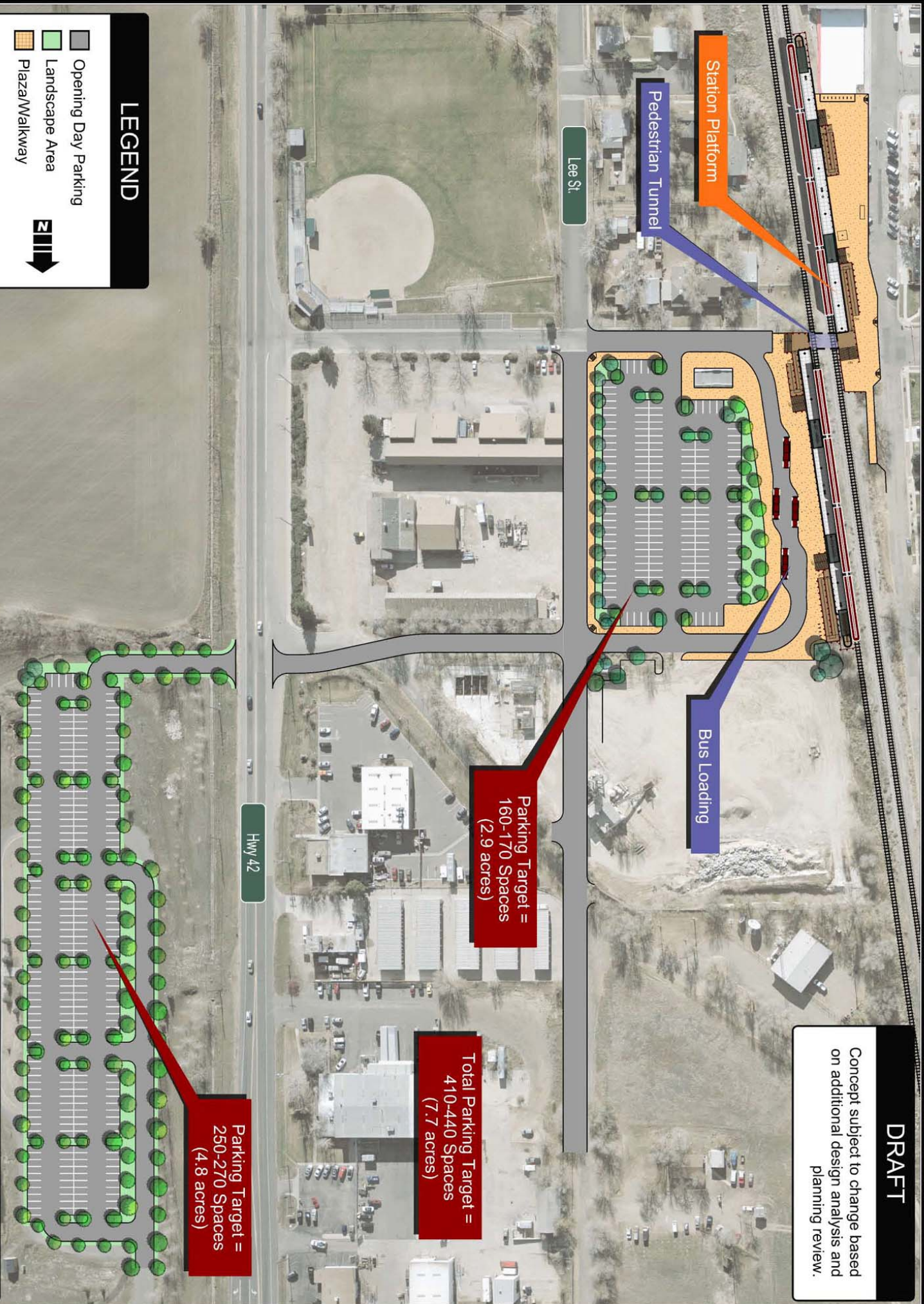


DRAFT

Concept subject to change based on additional design analysis and planning review.



Station Platform

Pedestrian Tunnel

Bus Loading

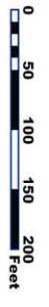
Parking Target =
160-170 Spaces
(2.9 acres)

Total Parking Target =
410-440 Spaces
(7.7 acres)

Parking Target =
250-270 Spaces
(4.8 acres)

LEGEND

- Opening Day Parking
- Landscape Area
- Plaza/Walkway



Downtown Louisville Station 2015

June 01, 2009