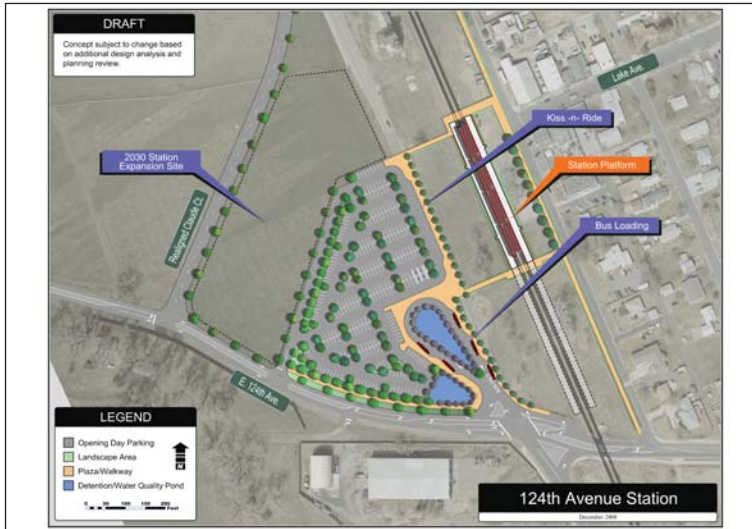


THORNTON STATION EVALUATION 124TH AVENUE OPTION

124TH AVENUE STATION CONCEPT



RTD RECOMMENDATION:

RTD recommends evaluating the 124th Avenue Station option and the 124th Eastlake TOD option in the FEIS. RTD will undertake additional consultation on concepts for refining the station with the City of Thornton, key stakeholders, and the community.

124TH AVENUE STATION – IMPACT ILLUSTRATION



LEGEND

Assessor Parcels	EMU Noise - Post Mitigation	Trails - Existing	100-Year Floodplain
Station Footprints	Severe	Trails - Proposed	Wetlands
Hazardous Materials Sites	Upper Moderate	Parks and Open Space	Riparian Vegetation
Archaeological/Historic (NRHP Eligible)	Lower Moderate	Parks - Proposed	Other Waters
			Prairie Dog Colonies

124TH AVENUE EASTLAKE TOD PLANNING



**EASTLAKE TOD OPTION TO BE
EVALUATED IN FEIS**

SOURCE: CITY OF THORNTON CONCEPT, 2008