

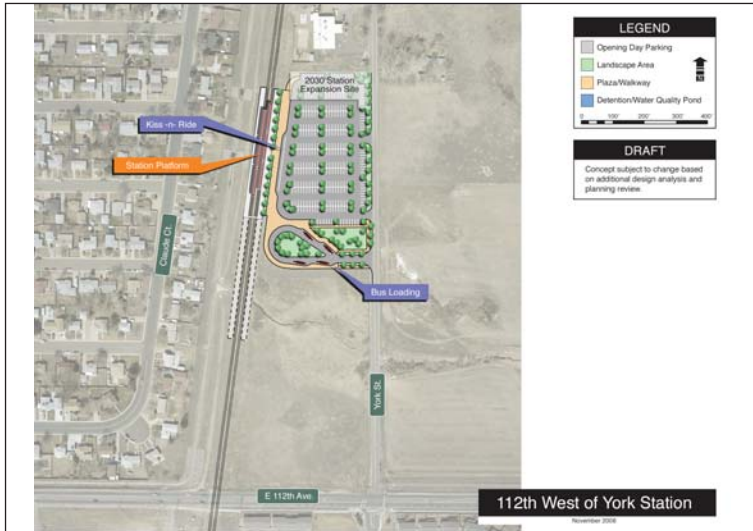
# NORTHGLENN STATION EVALUATION

## 112<sup>TH</sup> AVENUE PARKING WEST OF YORK OPTION

## 112<sup>TH</sup> AVENUE PARKING EAST OF YORK OPTION



### 112<sup>TH</sup> AVENUE STATION PARKING WEST OF YORK STREET CONCEPT



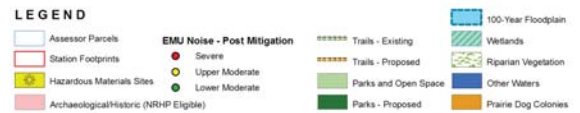
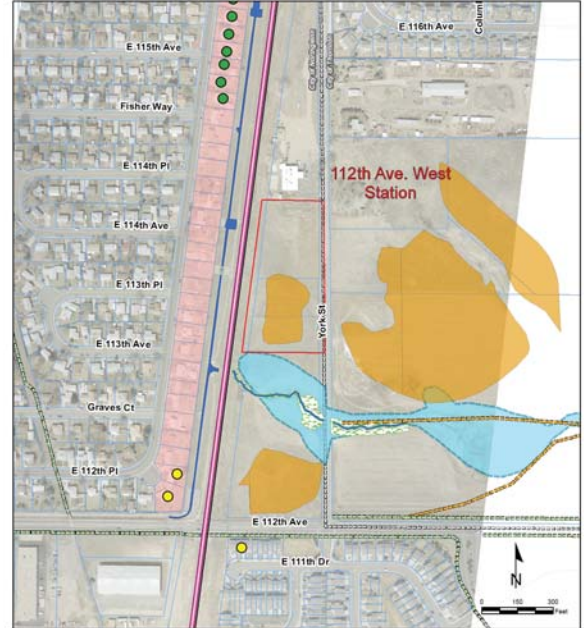
### RTD RECOMMENDATION:

RTD recommends the 112th Avenue Parking West of York Street Station option as the preferred alternative because the parking would be closer to the station platform.

### 112<sup>TH</sup> AVENUE STATION PARKING EAST OF YORK STREET CONCEPT



### 112<sup>TH</sup> AVENUE STATION PARKING WEST OF YORK STREET STATION – IMPACT ILLUSTRATION



### 112<sup>TH</sup> AVENUE STATION PARKING EAST OF YORK STREET STATION – IMPACT ILLUSTRATION

