

THORNTON STATION EVALUATION 88TH AVENUE OPTION 88TH AVENUE WELBY ROAD RELOCATION OPTION



88TH AVENUE STATION CONCEPT



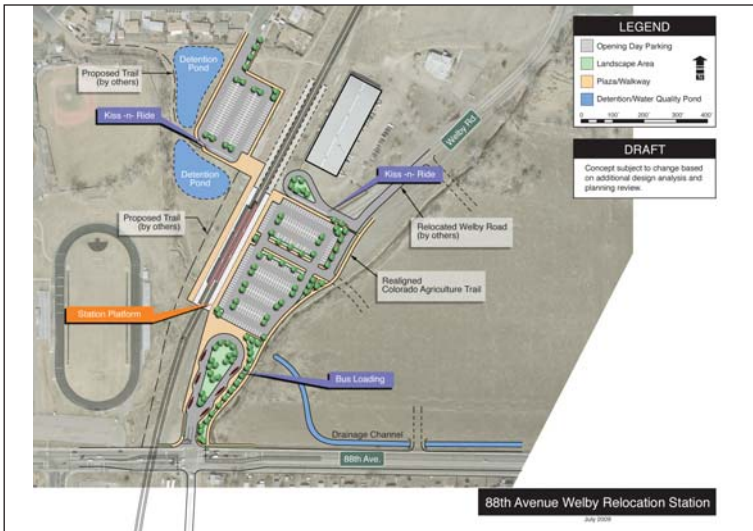
88TH AVENUE STATION – IMPACT ILLUSTRATION



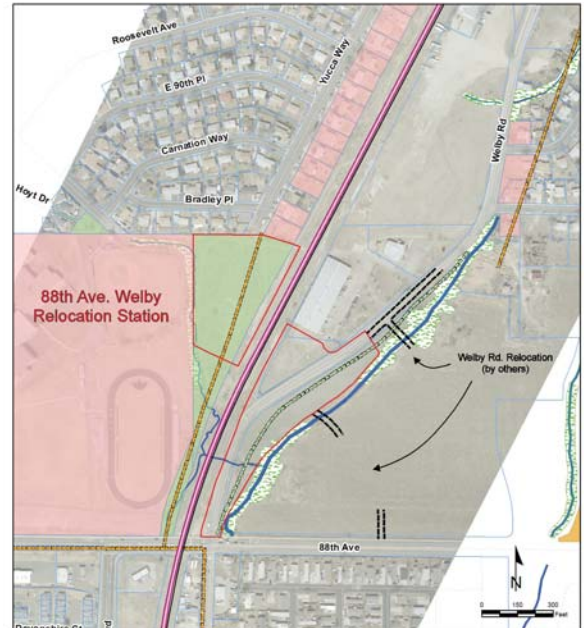
RTD RECOMMENDATION:

RTD recommends as the preferred alternative the station option that leaves Welby Road in its existing location because the option to relocate Welby Road creates alignment engineering concerns for RTD and depends on others to relocate Welby Road.

88TH AVENUE WELBY ROAD RELOCATION STATION CONCEPT



88TH AVENUE WELBY ROAD RELOCATION STATION – IMPACT ILLUSTRATION



SOURCE: CITY OF THORNTON CONCEPT ILLUSTRATED BY THE NORTH METRO CORRIDOR PROJECT TEAM, 2009.