

Welcome!

Environmental Evaluation and Preliminary Engineering for the FasTracks I-225 Corridor

**Public Meeting #2
Summit Event Center, Aurora, CO
March 12, 2008**

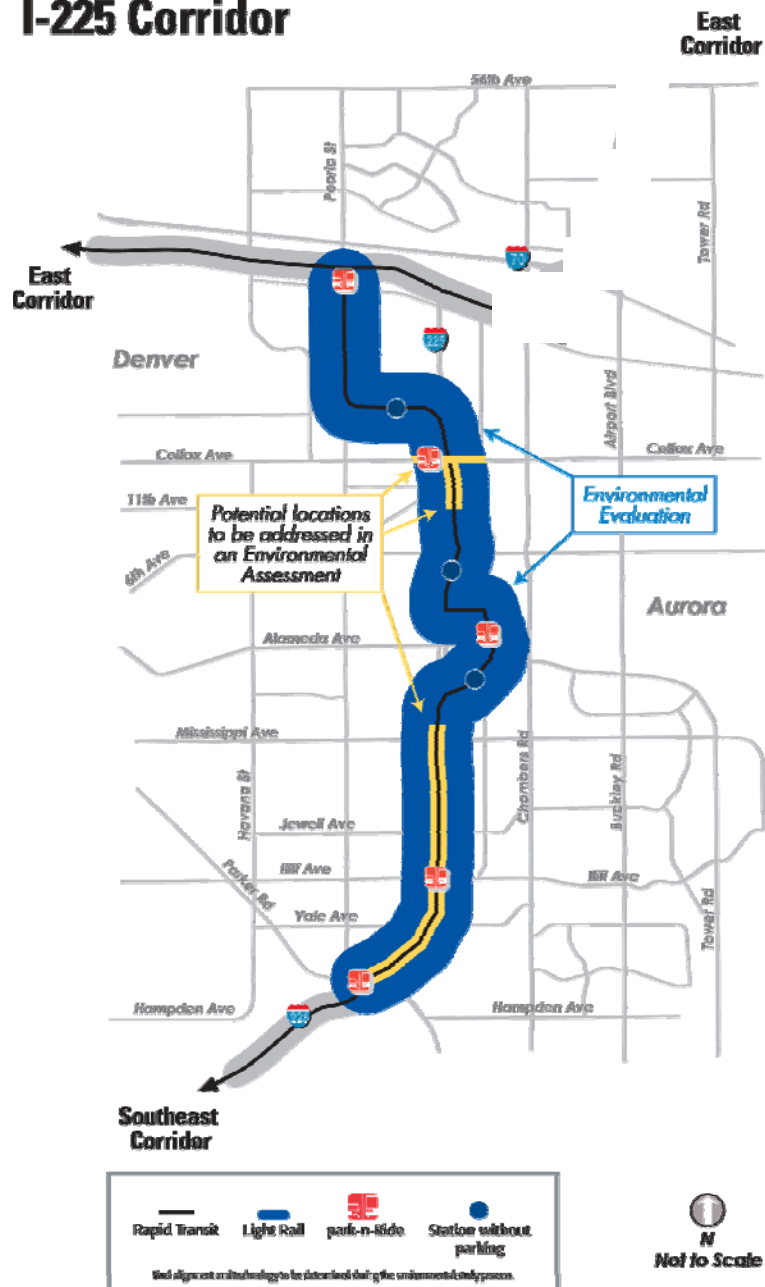
Tonight's FasTracks I-225 Corridor Agenda



- Review the project – definition, purpose, and schedule
- Review project alternatives and screening
 - Light Rail Alignments
 - Station Platform Locations
 - Parking Needs and Locations
- Obtain comment on alternative screening and preliminary corridor recommendations
- Review the City of Aurora's Station Area Plans
- Obtain questions
- Provide responses to questions

Review Project Study Area, Location and Purpose

I-225 Corridor



- 10 ½ mile light rail transit extension
- 7 stations
- Starts at existing Nine Mile Station
- Serves the Aurora City Center
- Serves the Anschutz / Fitzsimmons Medical Campus
- Provides a transfer to the planned East Corridor at a station near the intersection of Peoria Street and Smith Road

Review the Project How Do We Get There?



FasTracks I-225 Corridor Proposed Schedule

MAJOR TASK	START DATE	FINISH DATE	DURATION
Phase I			
• Environmental Process	Fall 2007	Fall 2009	27 mos
• Preliminary Engineering (30%)	Fall 2007	Fall 2009	27 mos
Phase II			
• RTD Design-Build Contractor Selection	Winter 2009	Summer 2011	18 mos
• RTD Right-of-Way Acquisition	Winter 2009	Summer 2011	18 mos
• RTD Utility Coordination	Winter 2009	Summer 2011	18 mos
Phase III			
• Design-Build Implementation	Summer 2011	Summer 2015	4 yrs
• Revenue Service	tbd	Summer 2015	
TOTAL DURATION	Start 2007	Finish 2015	8.5 yrs

Phase I Goals

- Prepare environmental documentation
- Prepare Preliminary Engineering (PE) level design plans
- Prepare the project cost estimate
- Complete work within 27 months
- Meet the established and current FasTracks budget
- Conduct an open public involvement process for stakeholders and the community at large

Alternative Development and Screening Process

WINTER '07

LEVEL I

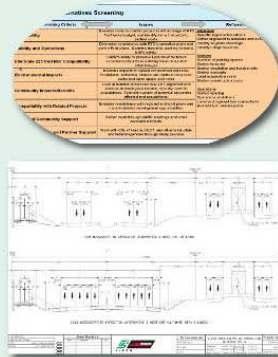
- Purpose and Need for the project, which includes the general location of the corridor and light rail transit as the technology



SPRING '08

LEVEL II SCREENING

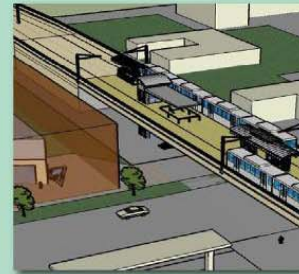
- Multiple options for alternatives (rail alignment and station platform locations) - based on previous studies and input from first public meeting
- Criteria and analysis for screening different alternatives



SUMMER '08

REFINEMENT

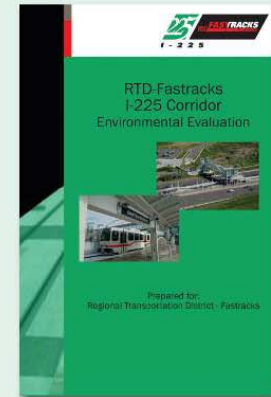
- Preferred Alternative based on screening and public and stakeholder input
- Information on specific location and number of parking spaces at each station
- Overview of potential impacts of preferred alternative



WINTER '08

ENVIRONMENTAL EVALUATION/ FEDERAL DECISION DOCUMENT

- Detailed impacts and benefits of preferred alternative
- Mitigation required to address impacts



TOPICS FOR PUBLIC INPUT

- General corridor location
- Light rail transit technology
- Corridor specific concerns

- Criteria for screening alternatives analysis
- Location of station platforms
- Whether or not parking should be at a given station
- Corridor specific concerns

- Preferred alternative (including impacts and benefits)
- Corridor specific concerns

- Environmental Evaluation results
- Mitigation measures
- Final Phase I opportunity for comment (prior to final approval of environmental documents)

Screening Criteria

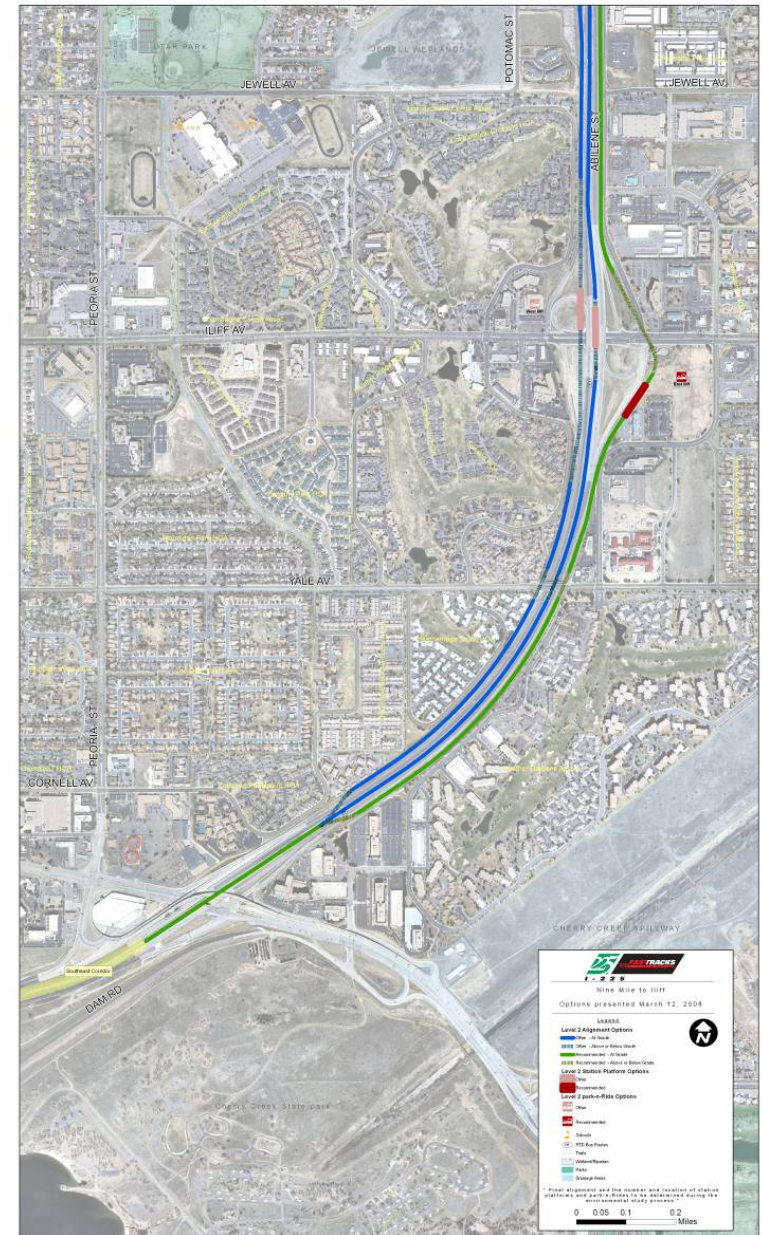


- Affordability
- Mobility and Operations
- Interstate 225 Compatibility
- Constructability Impacts
- Environmental Impacts
- Community Impacts
- Compatibility with Related Projects
- Degree of Community Support
- Degree of Agency Support

Review the Project Alternatives – Nine Mile to Iliff



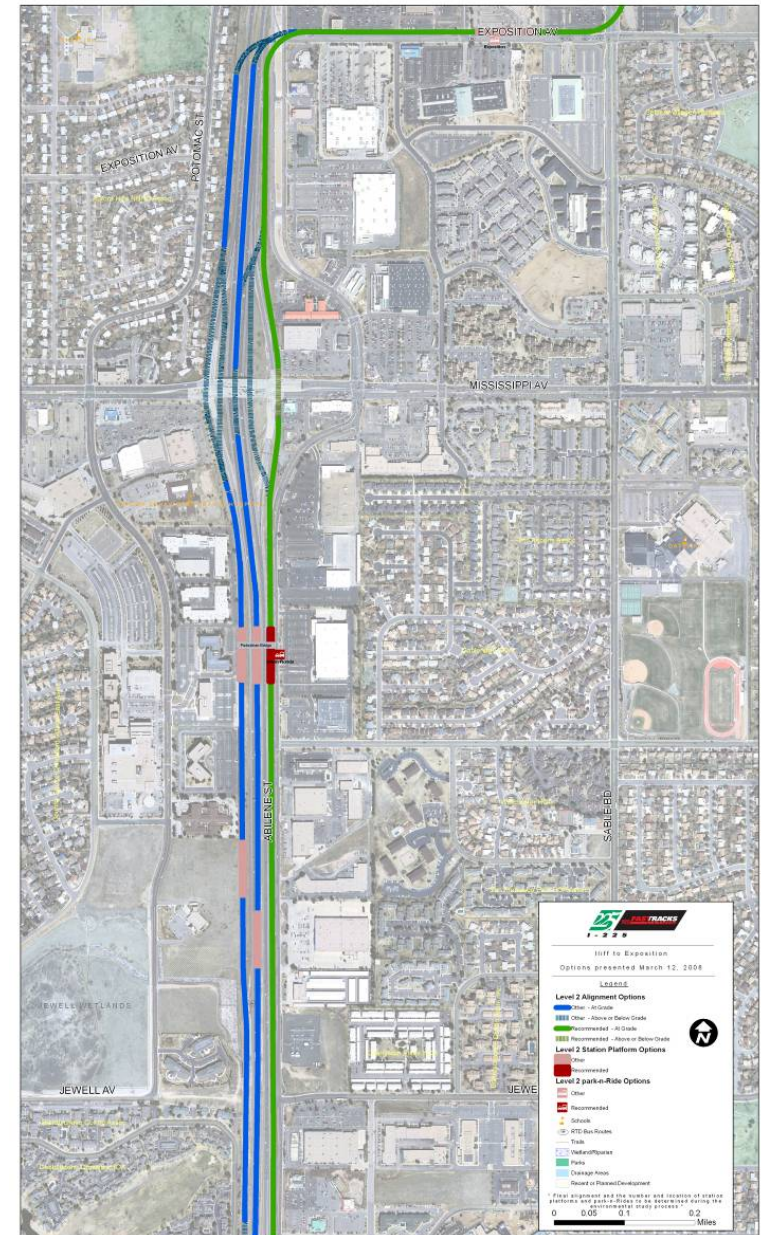
- Light Rail Alignments
- Iliff Station Platform Location
- Need for Parking



Review the Project Alternatives – Iliff to Exposition

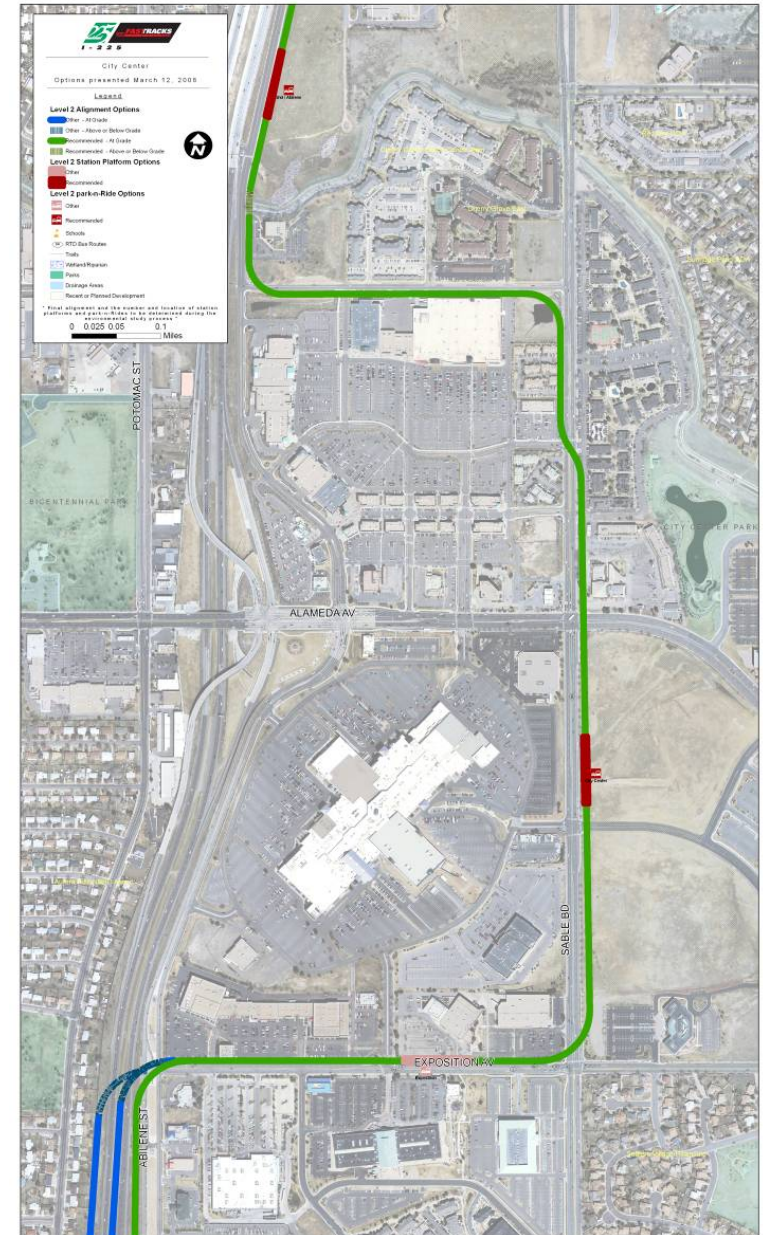


- Light Rail Alignments
- Florida Station Platform Locations
- Pedestrian Bridge
- Need for Parking



Review the Project Alternatives – City Center

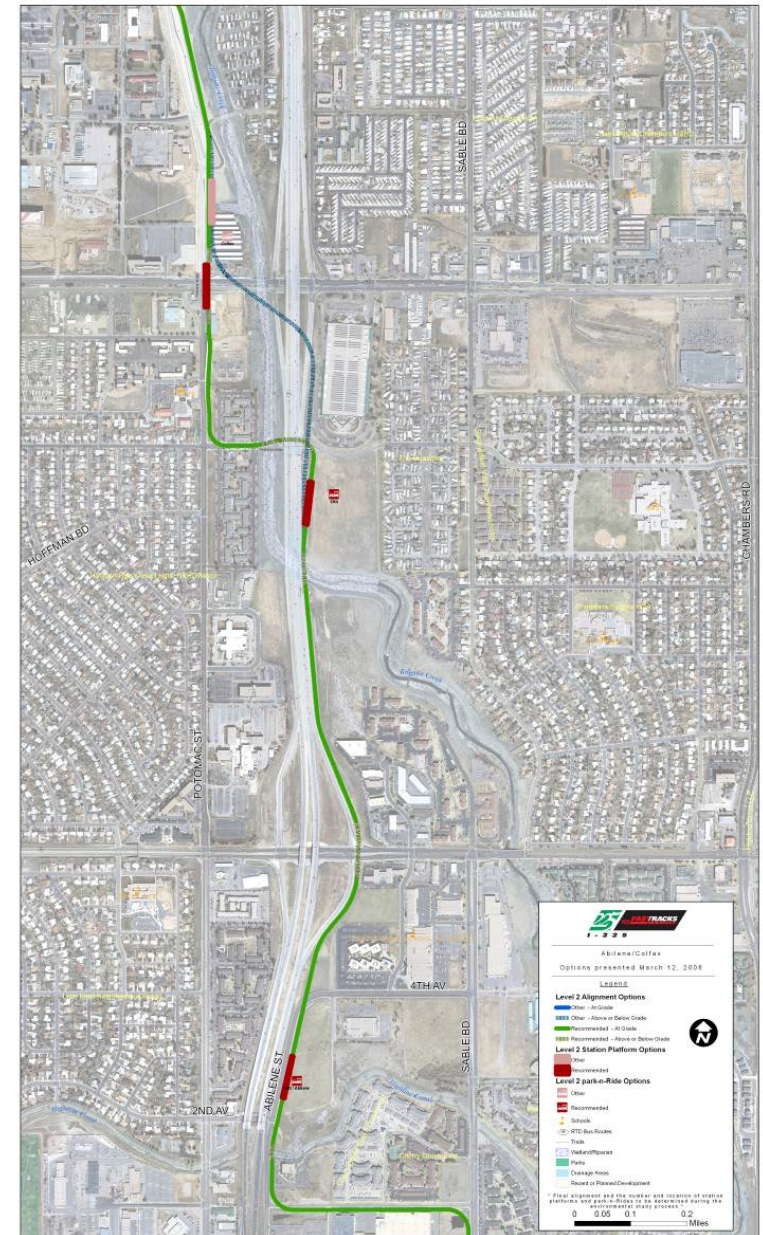
- Exposition / Sable / Ellsworth Light Rail Alignment
- Station Move – Exposition to Florida
- City Center Station Platform Location
- Need for Parking



Review the Project Alternatives – Abilene / Colfax



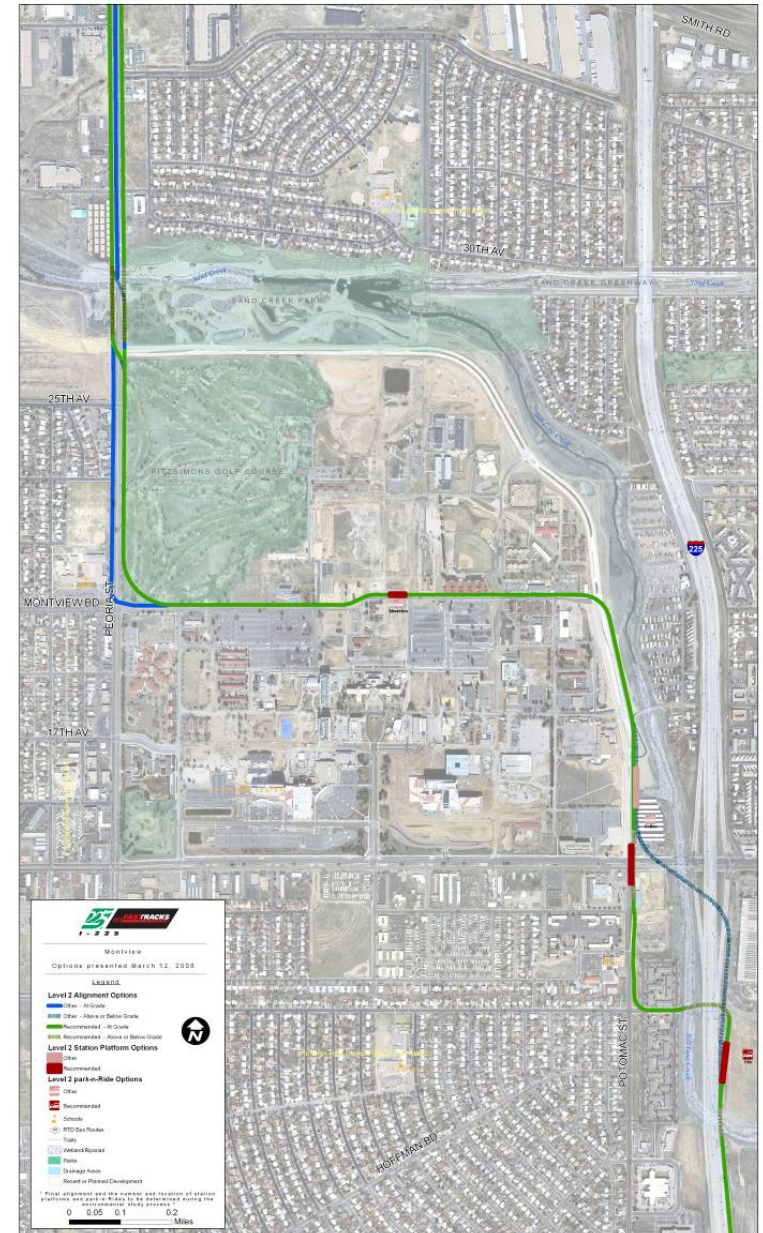
- Light Rail Alignment
- Abilene Station Platform Location and Parking Need
- 13th Avenue Potential Station Platform and Parking Need
- Colfax Station Platform Location and Parking Need



Review the Project Alternatives – Montview



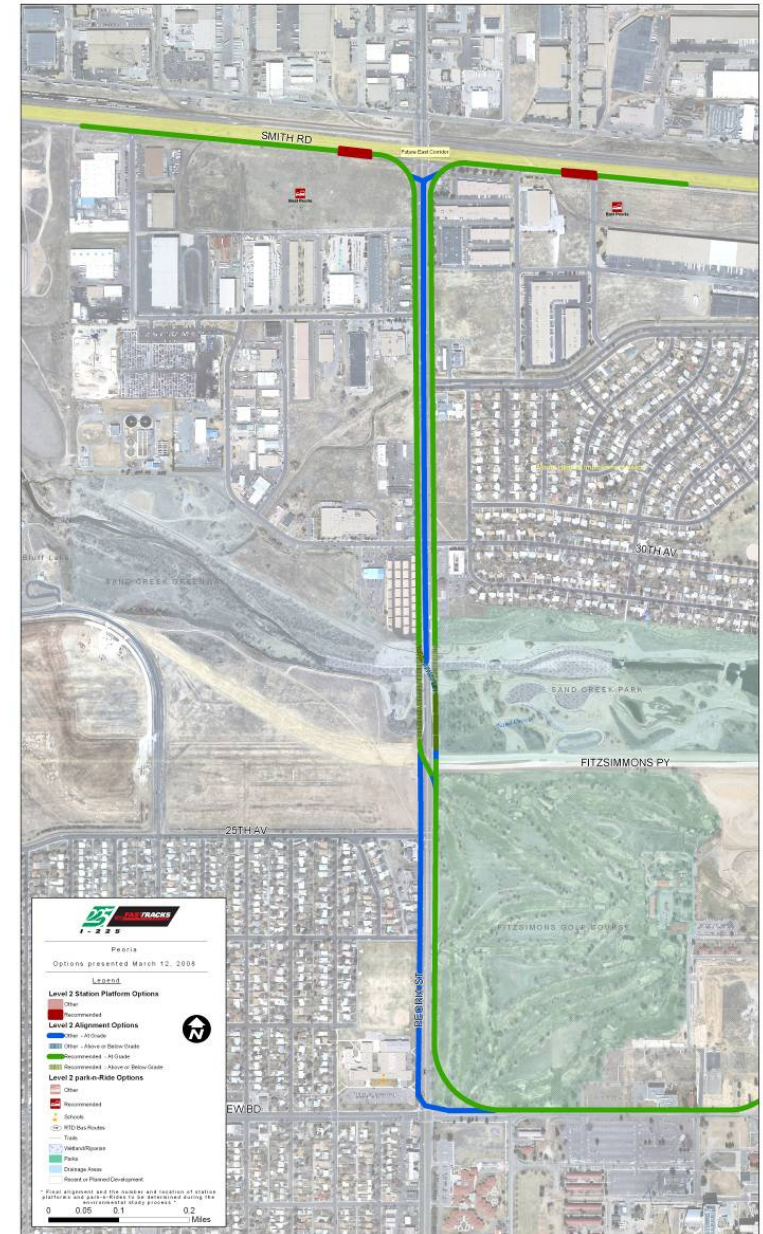
- Light Rail Alignment
- Montview Station Location



Review the Project Alternatives – Peoria



- Light Rail Alignment (East vs. West)
- Station Platform Location
- Need for Parking



Coordination with Public and Aurora City Council



- Public and Elected Officials' Meetings – October through January
 - ✓ Introduced Project
 - ✓ Presented Prior Studies and Alternatives
 - ✓ Gathered public and officials' input
- January through March 2008
 - Present Alternatives
 - Review specific section alternatives and issues
 - Present Screening Criteria and Recommended Alternative
- April and June 2008
 - Identify and Assess Preferred Alternative
 - Assess Environmental Issues / Identify Potential Mitigation
- Finalize EE and EA – Spring 2008 to Spring 2009
- Preliminary Engineering – Fall 2008 to Fall 2009

Public Participation



- How to Contact the I—225 Project Team
 - Website: www.rtd-fastracks.com/i225
 - E-mail: i-225@rtd-fastracks.com
 - RTD-FasTracks Hotline: (303) 299-2000 and follow prompts
 - Fax: (303) 693-7738

Questions?

